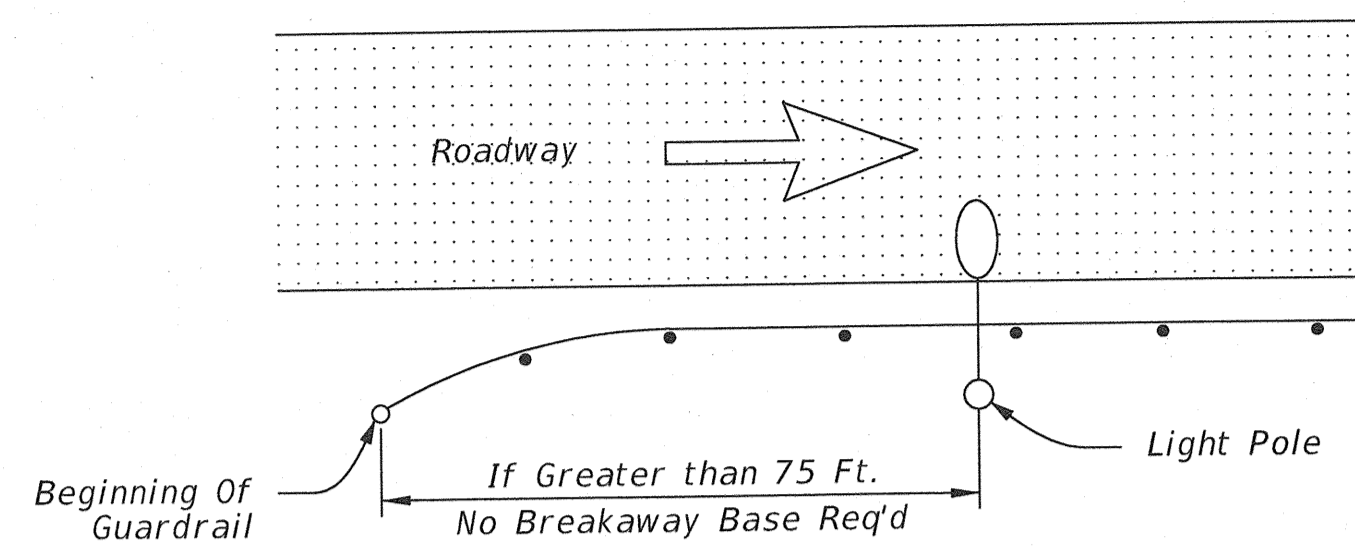


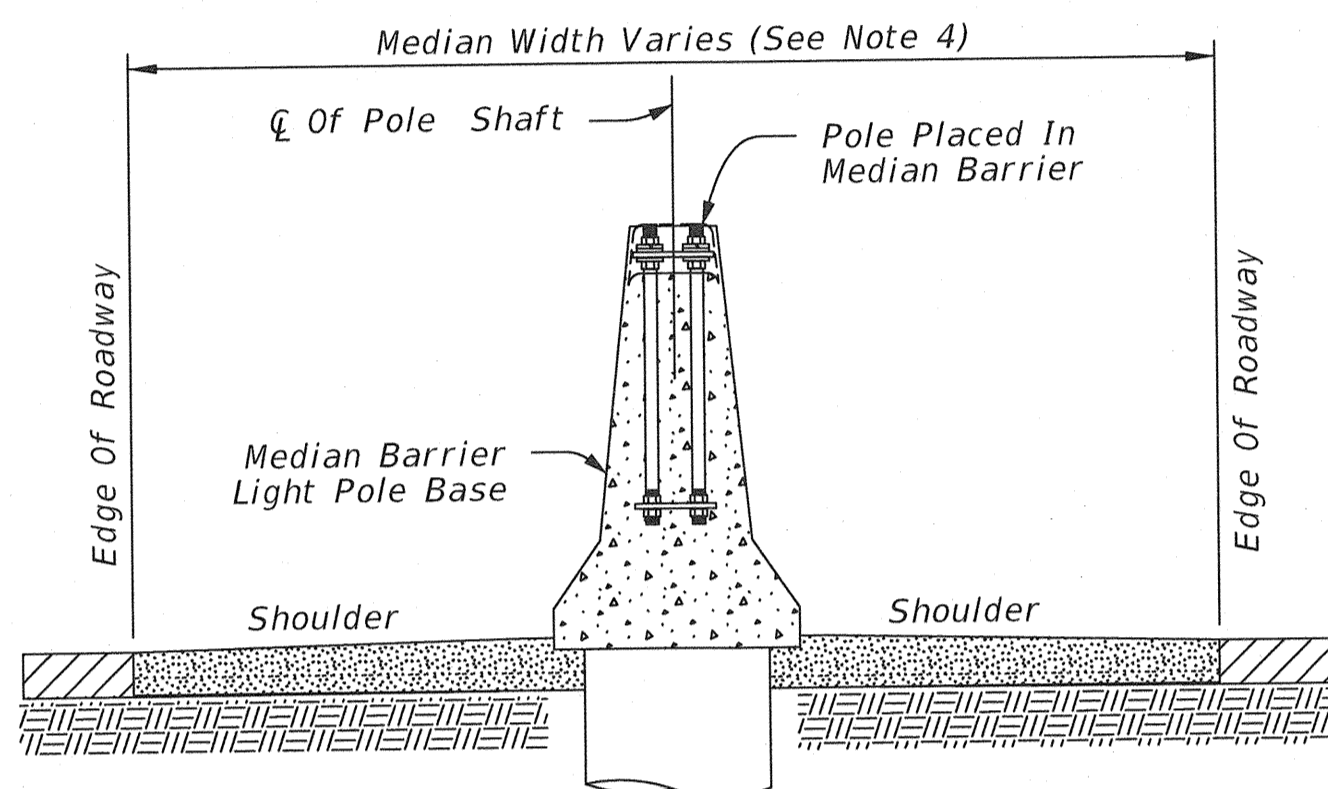
W/O BARRIER Median Area Placements



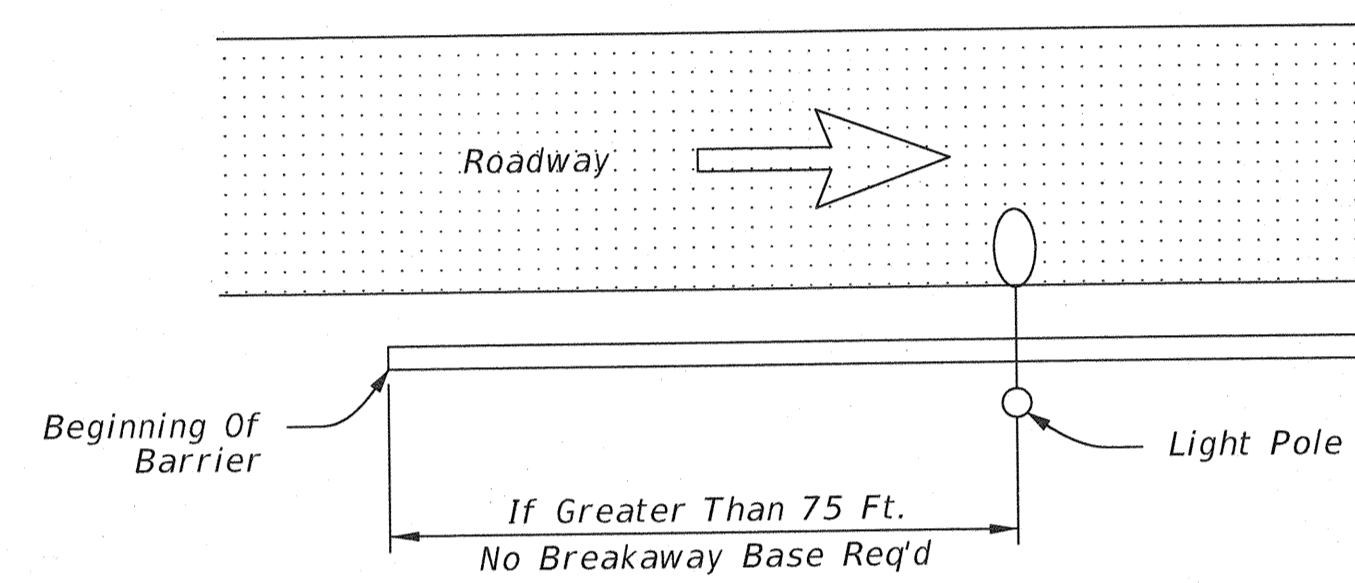
Plan View

General Notes:

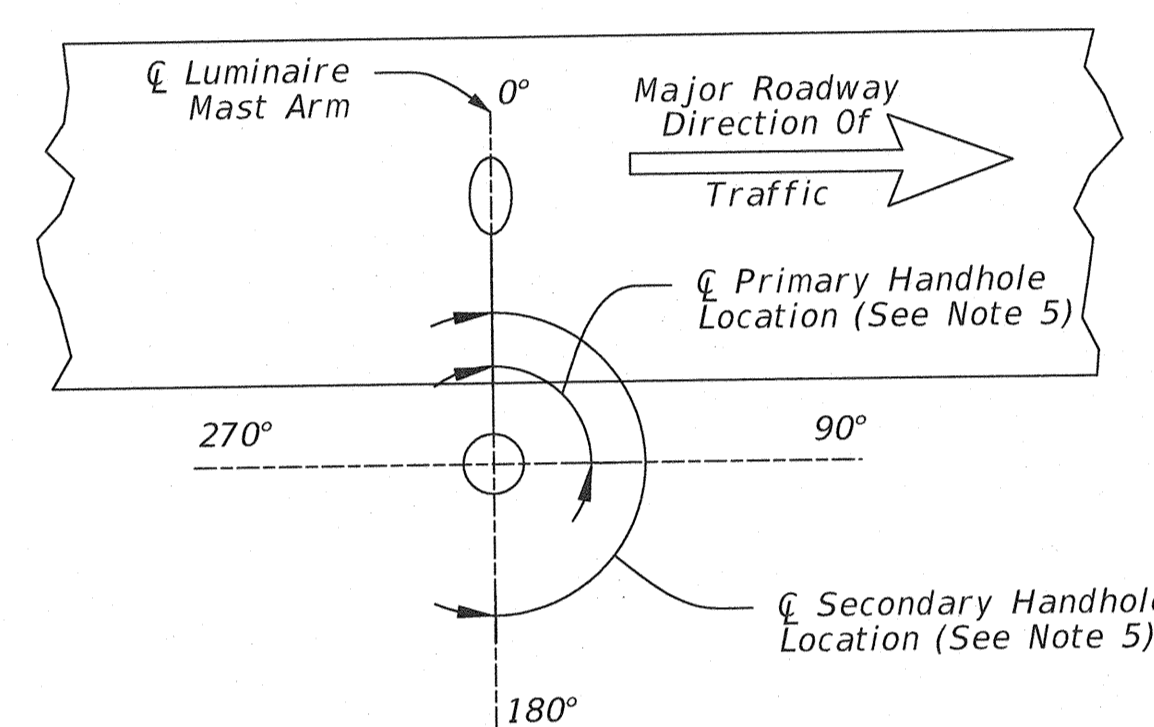
1. For construction and installation details of footings and poles, see the Standards PMBD1-1 (Latest Revision).
2. If the clearance distance of clear zone on the plans contradicts what the light pole clearance distance table shows, then the contractor shall install the light poles according to what is specified in the table on this standard.
3. Median width must be greater than pole shaft height unless otherwise specified on the plans.
4. Normally the shoulder width must be wide enough, 10 Ft. or more, to park a maintenance vehicle.
5. All poles, except transformer base poles, shall have hand holes with reinforcing frames and covers. Except for poles mounted on a concrete traffic barrier, hand holes shall be placed 90 degrees to mast arm and opposite the direction of traffic flow unless otherwise noted on the plans. For poles mounted on a concrete traffic barrier with one luminaire arm, hand holes shall be located 180 degrees from luminaire arm. For poles mounted on a concrete traffic barrier with two luminaire arms, all hand holes shall be on the same side of the barrier.
6. If an additional luminaire mast arm is specified, the normal location is at 180 degrees.
7. For signal pole and mast arm and for combination signal pole with luminaire arm orientations, see signal pole standards or the plans.



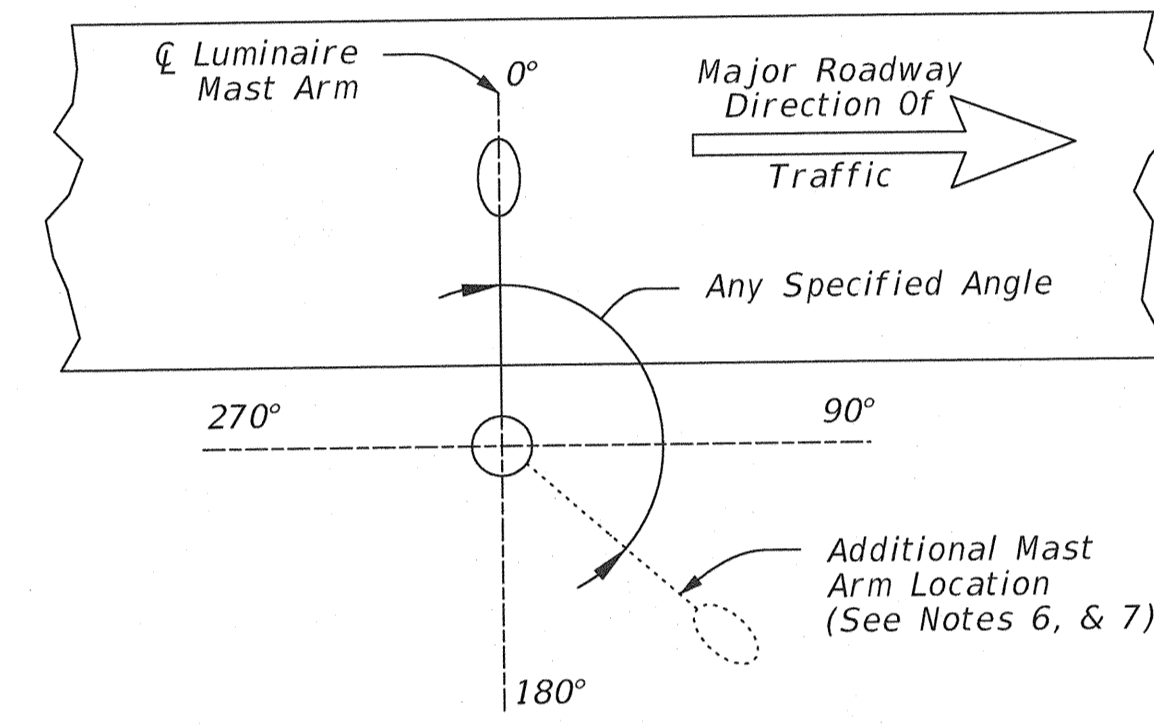
W/ BARRIER Typical Median Barrier Design X Median Area Placements



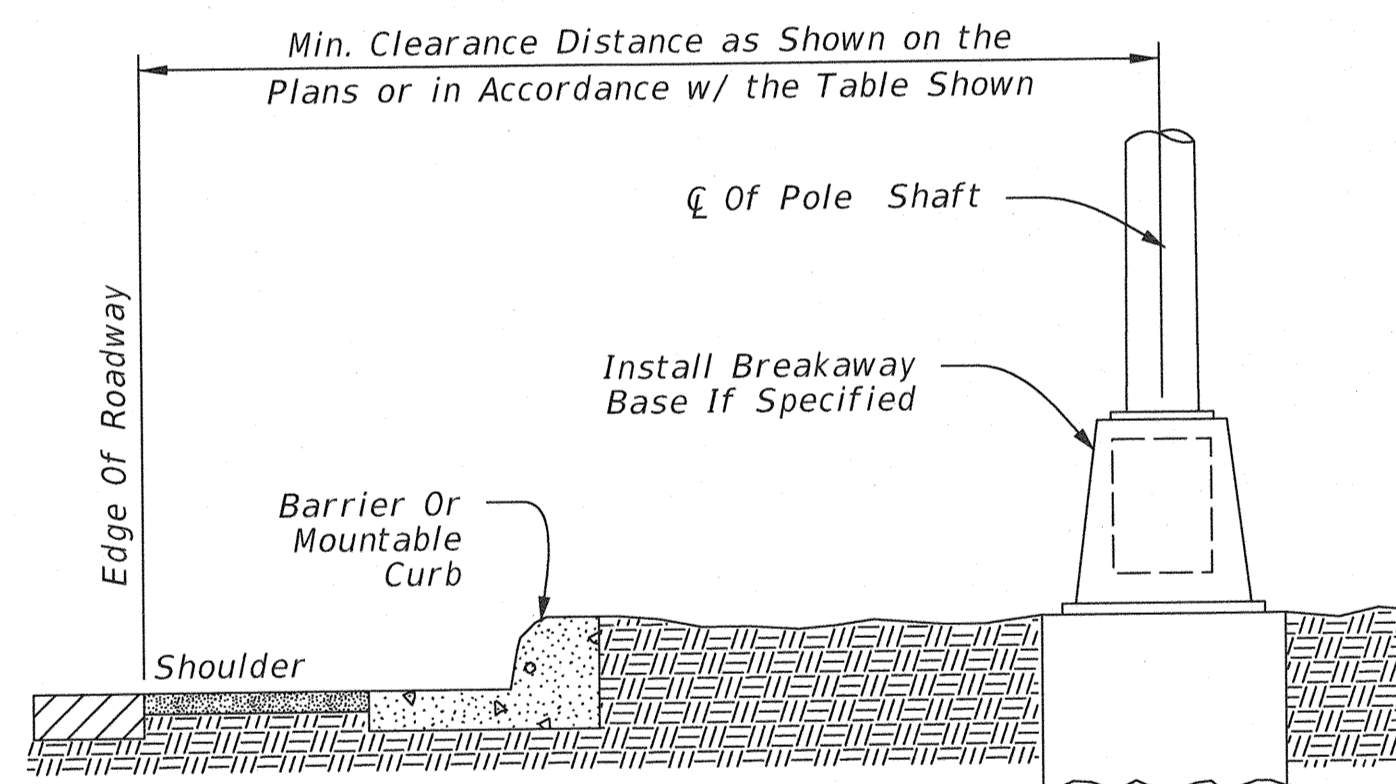
Plan View



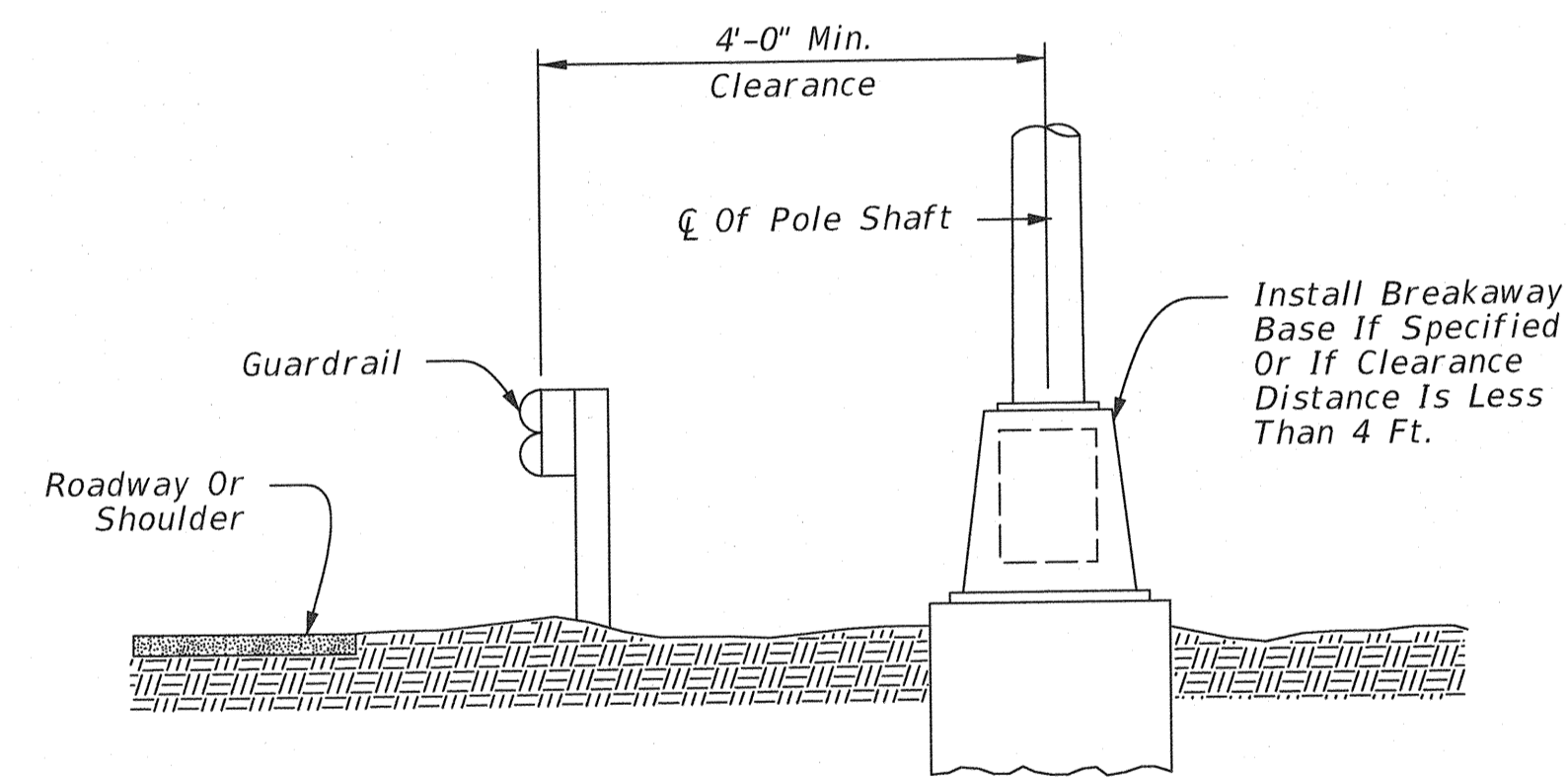
Handhole Orientation Detail



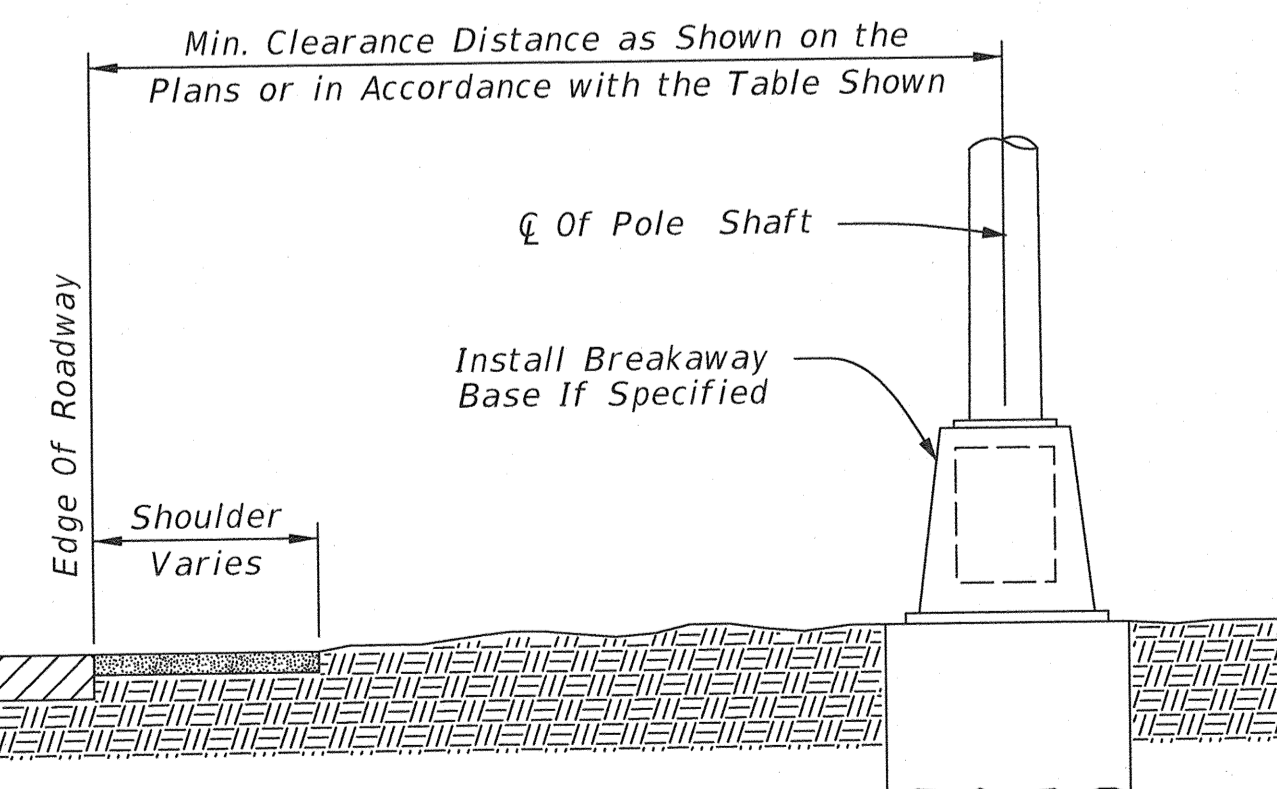
Mast Arm Orientation Detail



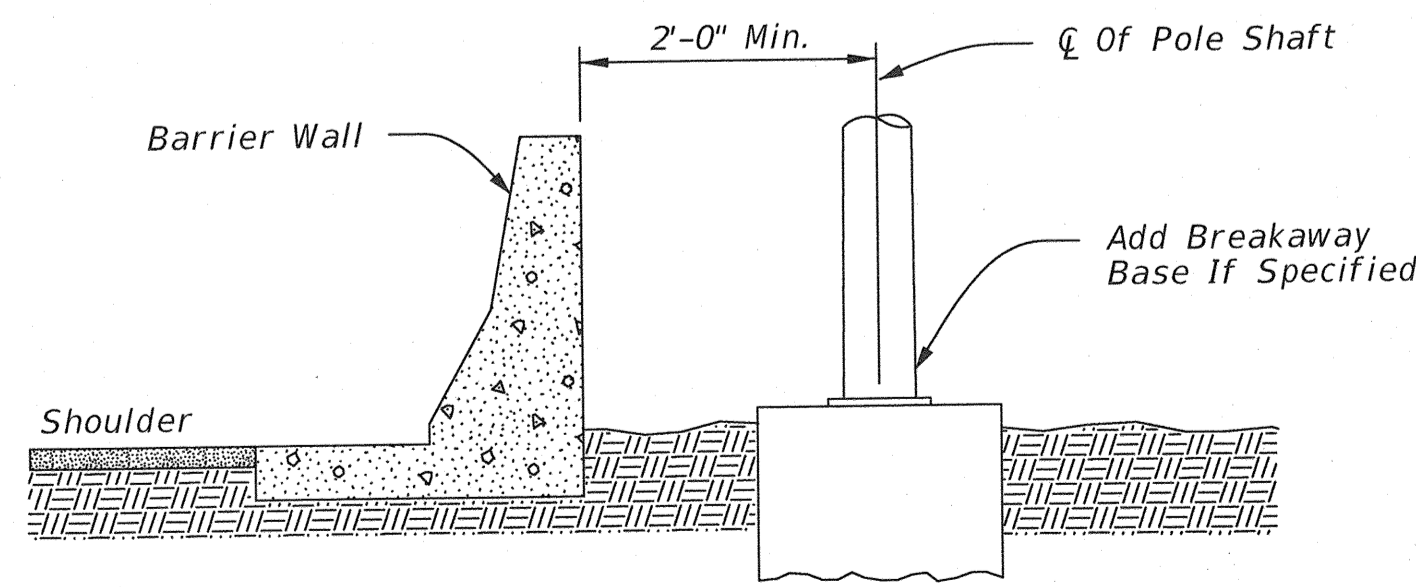
Roadway With Curb Placements



Roadway With Curb Placements



Roadway With Shoulder Placements



Roadway With Shoulder Placements

Speed Limit or Operating Speed (MPH)	Recommended Clearance Distance or Clear Zone (FT)	Minimum Clearance Distance or Clear Zone		
		Roadways With Shoulder or Mountable Curb Breakaway Base Required (FT)	Roadways With Barrier Curb	
			Breakaway Base Required (FT)	Breakaway Base Not Required (FT)
55 or More	30	16	16	NR
50	25	14	14	NR
45	20	12	10	14
40	15	10	8	12
35 Or Less	10	8	4	8

NR = Not Recommended

Approved By Bridge Engineer: *[Signature]* Date: 3-24-16
 Approved By Traffic Engineer: *[Signature]* Date: 3/14/2016
DOT
 Traffic Standard
 Typical Light Pole Placement Detail
 2009 Specifications